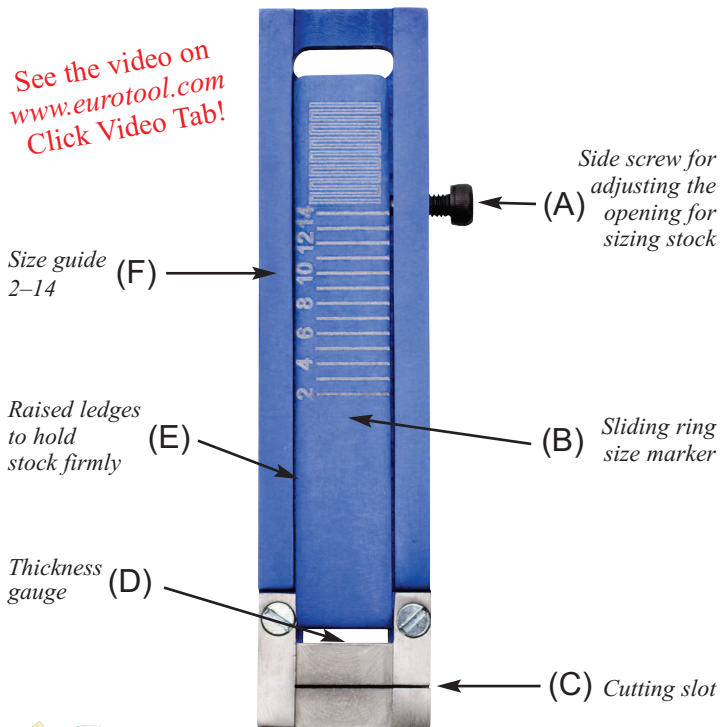


Instructions for WHALEY RING GAUGE

Patent Pending

The Whaley Ring Gauge allows jewelers to cut perfectly sized ring stock in a variety of thicknesses, in any metal, eliminating the need for charts or complicated formulas!

See the video on
www.eurotool.com
Click Video Tab!



Follow these easy steps to cut ring stock to size.

1. Start with straight, flat ring stock.
2. Loosen thumb screw (A) to allow the center of the gauge to slide freely creating an opening (D) on the end nearest the cutting slot (C).



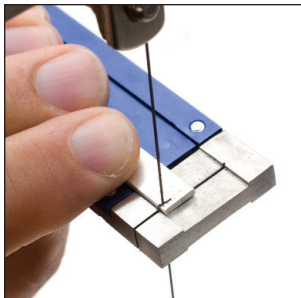
3. Place either end of ring stock through window and slide center section (B) snug against ring stock and tighten thumb screw. This will accurately calibrate the tool based on the thickness of your ring stock.



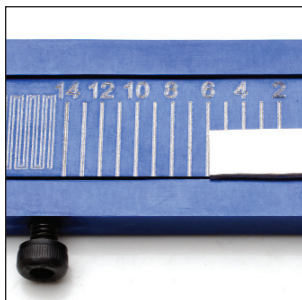
4. Remove ring stock from slot and place along the raised ledge (E) slightly overlapping the cutting slot.



5. Holding it firmly against ledge with four fingers, guide your jewelers saw into the cutting slot and cut off a small piece to create the first straight edge.

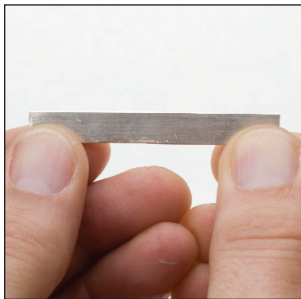


6. Place newly cut edge on desired ring size (F) and along ledge. For example, if a size 6 is desired, place cut edge at “6” on the size line indicator.



7. The remaining ring stock should hang over the cutting guide and is now ready for the second cut.

8. Once the second cut is complete, the ring stock is now ready to form a finished band.





GAU-747.00



Made in Pakistan • Patent Pending

Whaley products distributed exclusively through EUROTOOL, Inc.